



MAXIMIZE COMFORT
MAXIMIZE EFFICIENCY



VinciSmile[®] Premium



VinciSmile® Premium



VinciSmile® Premium

VinciSmile Premium takes biocompatible high-performance material, PremiumControl, and combines with IntelMove technology, thus the premium aligners can be more efficient, accurate, comfortable and hygienic.



Newest IntelMove Technology
(Tech α + Tech β)



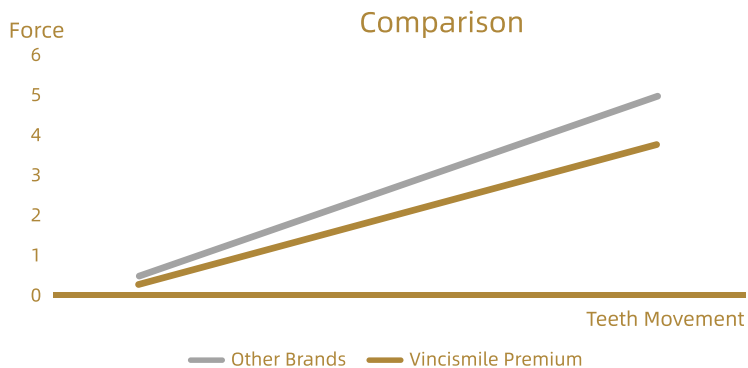
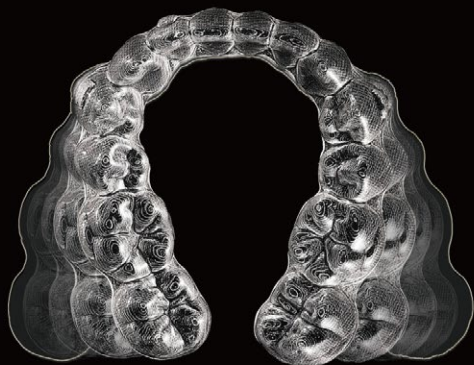
Advanced Premium
Control Material



Help speed up teeth movement,
even more comfortable*

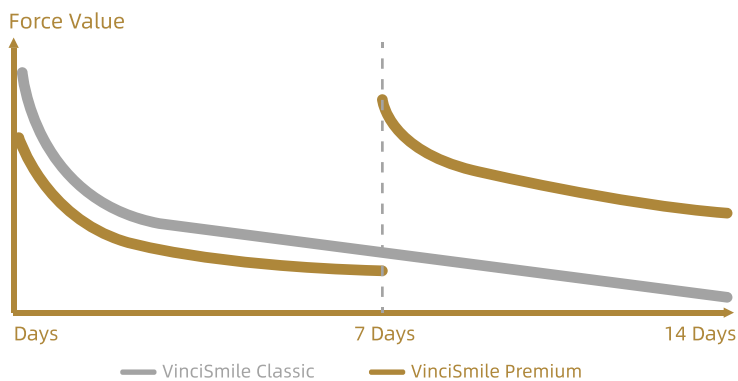
*Compared to VinciSmile Classic version

INTELMOVE TECH· α



Thin and flexible soft α aligner features facilitated elastic deformation, to provide fast teeth movement.

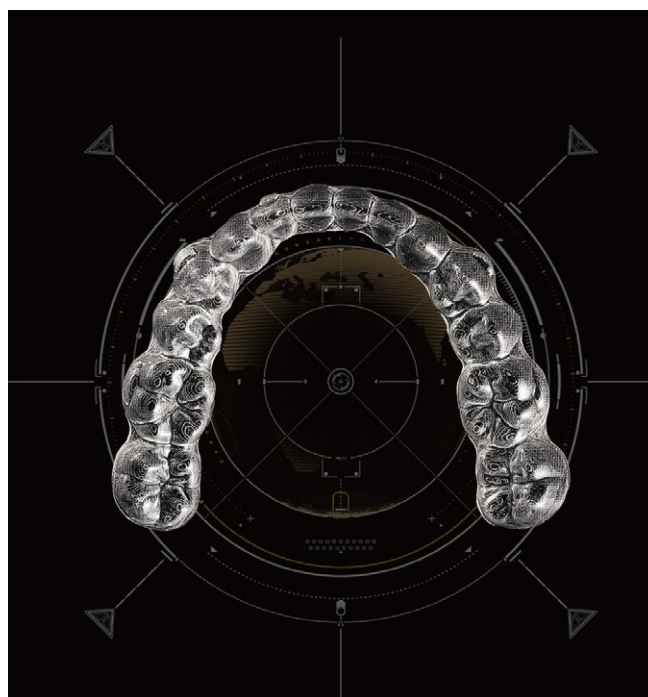
IntelMove Tech reduces orthodontic pressure on teeth to get painless treatment experience.



Thicker β aligner's rigidity with stronger control effect ensures accurate dental root movement.

Adding in the ideal treatment timing, the hard aligner can complete and perfect the orthodontic mechanism in the whole treatment.

INTELMOVE TECH· β



INTELMOVE

VinciSmile Premium IntelMove technology moves teeth faster with double power from two different-thickness aligners in every stage, less painful than other brands.



— SINGLE FORCE —

Average teeth movement speed up to 0.2mm

Sore teeth experience may occur

Single force prolongs treatment time

May require more steps to complete the treatment



— DOUBLE FORCE —

VinciSmile® **Premium**

Increase movement speed from 0.2mm to 0.3mm

Painless and comfortable

Double force targets precision

Speed up teeth movement, even more comfortable

BIOCOMPATIBLE HIGH-PERFORMANCE MATERIAL



· Higher Elastic Modulus ·



· Excellent Tear Resistance ·



· Superior Force Control ·

ADVANTAGES

Soft aligner- α

Thickness: 0.625mm

Elasticity:

889.3 Mpa

Softer force moves teeth gently and fast



Hard aligner- β

Thickness: 0.75mm

Elasticity:

1037 Mpa

High elasticity modulus strengthens movement control



MORE ACCURATE

Hard aligner with large elastic modulus manipulates stable orthodontic force in long-term, to realize the target position effectively.



MORE EFFICIENT

The updated aligner material, PremiumControl, reaches the target position faster.



MORE COMFORTABLE

Each step starts with a soft aligner to optimize the comfortable experience.



MORE HYGIENIC

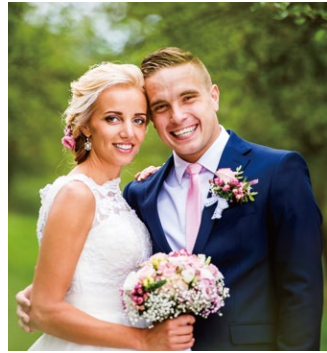
U.S. FDA approved product; Greatly reduce aligner wearing time, beneficial to keep oral hygiene.

YOU SMILE. WE CARE.

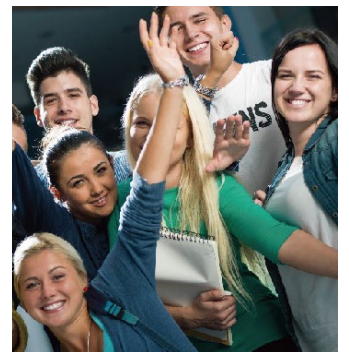
We exist to create a world with confident smiles and improve dental health, by providing the best aesthetic treatments at the best price.



Your Smile.
Our Mission.



You deserve a perfect smile on your BIG DAY!

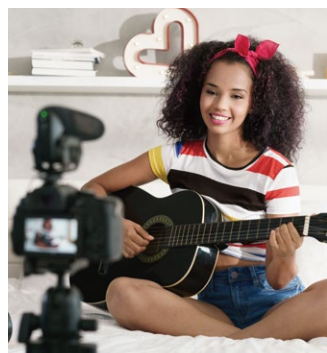


Get them started to a healthier life-style.



You have lots of goals in your life, We only have one: your smile!

Come over work challenges with your confident smile.



A beautiful smile helps you conquer the world.

VINCISMILE INTRAORAL DIGITAL IMPRESSION INSTRUMENT

A powder-free intraoral scanning device can display the teeth details in a high-definition natural view based on video dynamic intraoral scanning.

Starting 3D light structure scanning technology, high-speed and anti-shaking performance AI technology makes you enjoy the smart experience and smooth scanning.

Intelligent tracking technology ensures fast recovery scanning of any oral position.



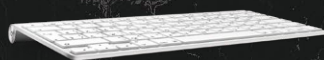
ANALYTICS



REAL-TIME



USER-FRIENDLY
HMI





VINCISMILE GROUP LLC

Add: 20524 Carrey Rd. Walnut, CA 91789, USA

Email: info@vincismile.com

www.vincismile.com



Follow @VinciSmile