



## Glass Ionomer Cement Filling I

HUGE Filling I is an excellent self-adhesive, bulk glass ionomer cement that guarantees reliable and lasting restorations.

Based on HUGE's proven filling application technology, Filling I provides stable performance and excellent operation experience. Sustained release of fluoride ions can prevent the occurrence of secondary caries. In addition, due to the good biocompatibility of the material, postoperative allergic reactions are almost eliminated.

### Stable/Easy/Aesthetic

Standard package:  
15g powder+12g liquid + 1 measuring spoon + 1 mixing pad  
Available in Shades A1,A2,A3



### SUITABLE FOR A MULTITUDE OF CLINICAL CASES:

- Restoration of primary teeth
- Restorations of Class III, V and limited Class I cavities
- Base linings under composite and amalgam
- Core build-up
- \* Ideal paediatric & geriatric restorative



### COMPARED WITH OTHER COMPETITORS:

Product	Mixing Time	Working Time	Net Setting Time	Compression Strength
HUGE Filling I	<60s	2min20s	2min45s	>150Mpa
G* FU*	<40s	3min10s	3min05s	>150Mpa
G* FIX*	<30s	3min30s	3min10s	>150Mpa
SH* F*	<40s	2min25s	2min35s	>150Mpa

\* Data From HUGE laboratory

# HUGE



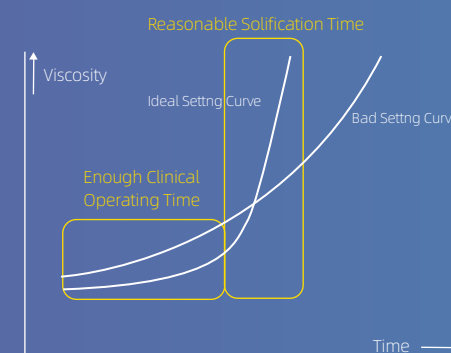
## Glass Ionomer Cement

Universal Enhanced Glass Ionomer System  
Convenient And Efficient Clinical Solutions

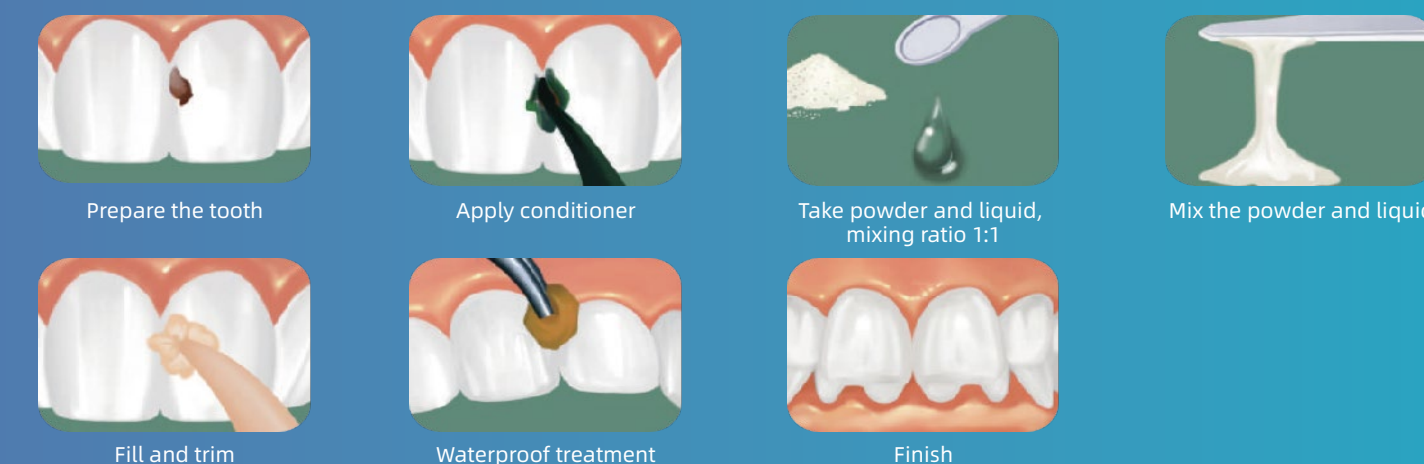


### ADVANTAGES:

Reasonable setting curve well balances the time and viscosity, which guarantees the solidification happens in right operation time. As can be seen in the figure, the setting curve of HUGE GIC is relatively steep, which means the materials cured quickly in the patients mouth, minimizing the saliva contamination significantly.



### DIRECTIONS FOR OPERATION:



Shandong Huge Dental Material Corporation

Add / No. 68 Shanghai Road, Donggang District, Rizhao City, Shandong Province, 276800, P.R. China.  
Tel / +86 (633) 2277268 marketing@hugedental.com www.hugedental.com

- Facebook Huge Dental
- Instagram Huge Dental
- Youtube Huge Dental

# HUGE Glass Ionomer Cement

HUGE Glass Ionomer Cement (GIC), a unique system that includes adhesive cement and glass ionomer restorative materials, truly realizes a comprehensive system of high-performance clinical products. Filling I, Luting I and Luting II will meet all needs for aesthetic restorations and bonding. Unique new formulation provides excellent aesthetics, translucency, long-lasting anti-caries resistance and stability.

HUGE is committed to the research of glass ionomer material science to promote the development and popularization of the global...

## That's why we're here:

### BENEFITS FOR AN EFFICIENT CLINICAL SOLUTIONS:

- Excellent biocompatibility and good tissue response
- Chemically bonds to tooth structure for excellent edge sealing
- Optimum thixotropy and ideal film thickness
- Durable physical properties, high acid resistance and low oral solubility
- Ensures little postoperative sensitivity and good pulp response
- Resin-free, suitable for patients with resin allergies
- Easier to clean than resin-bonded materials
- No etching or bonding required for fast, easy and simple application
- Ideal for pediatric, geriatric and special needs patients.
- cost-effective
- X-ray resistance



# HUGE Glass Ionomer Cement Luting I

HUGE Luting I is a truly biocompatible, quick-set, contemporary luting glass ionomer that guarantees reliable and lasting restorations.

Based on HUGE's proven self-adhesive bonding technology, Luting I provides stable performance, good flow, easy handling, promotes remineralization, improves acid resistance and reduces solubility through antimicrobial properties, while virtually eliminating post-operative hypersensitivity reactions.

## Quick / Easy/ Ideal Film Thickness

Standard package: 30g powder + 25g liquid + 1 measuring spoon + 1 mixing pad



## RESTORE A MULTITUDE OF CLINICAL CASES

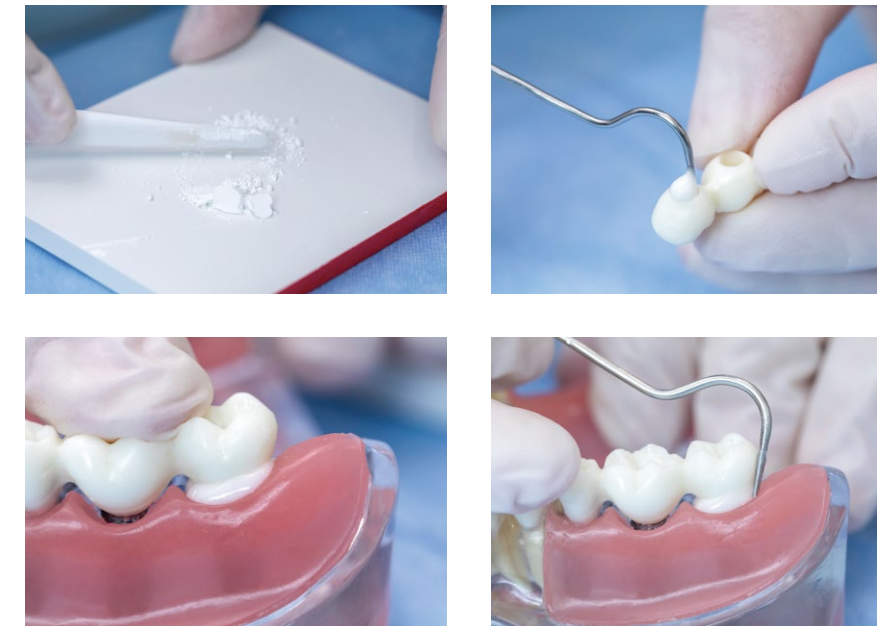
Indication		Luting I
Inlay/Onlay/ Crown/Bridge	Ceramic/Glass Ceramic	✓
	Oxide Ceramic	✓
	Metal/Metal-Based	✓
	Composite Resin	
Post/Screw	Metal	✓
	Oxide Ceramic	✓
Orthodontic Bands		✓

## DIRECTIONS FOR OPERATION:



## Quick / Easy/ Excellent Performance

\*Glass ionomer materials are easier to clean than resin-bonded products, especially in the restorative areas of posterior teeth.



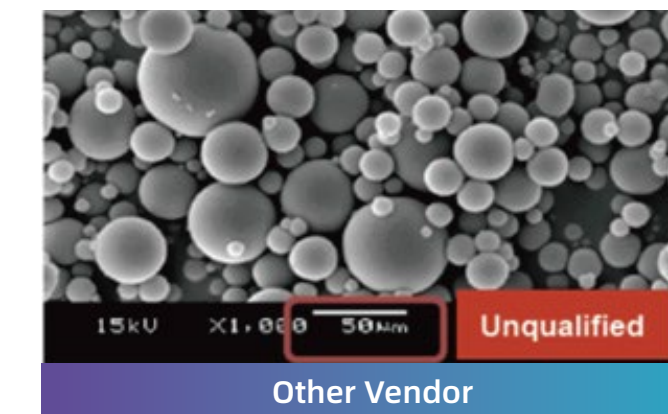
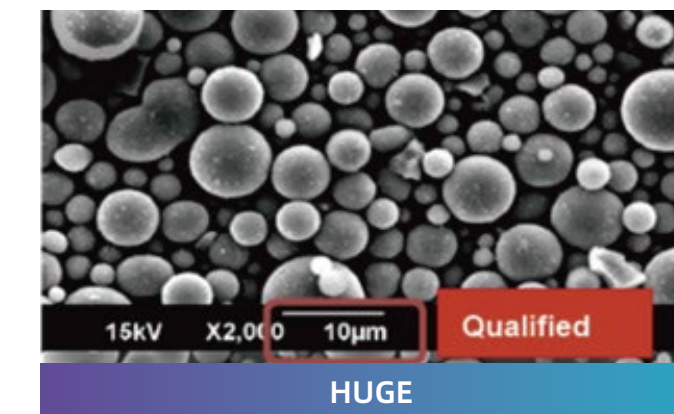
## COMPARED WITH OTHER COMPETITORS

Product	Mixing Time	Working Time	Net Setting Time	Film Thickness
HUGE Luting I	45s	2min10s	3min05s	12µm
G* FU*	20s	2min40s	2min30s	18µm
3* Ke *	18s	3min02s	3min30s	22µm
VO**Me*	30s	2min17s	4min00s	25µm

\* Data From HUGE laboratory

## ADVANTAGES

The particle size of Huge GIC Luting is obviously smaller than most of other vendors.



# HUGE Glass Ionomer Cement Luting II

HUGE Luting II is HUGE's unique two-in-one product. By changing the mixing ratio of powder and liquid, it can not only achieve the effect of bonding cement, but also can be used for filling. It is a comprehensive product that combines the performance of HUGE Luting I and Filling I.

Based on HUGE's proven GIC technology, Luting II provides stable performance, good flow, easy handling, promotes remineralization, improves acid resistance and reduces solubility through antimicrobial properties, while virtually eliminating post-operative allergic reactions.

## Multifunctional—apply as both luting and filling

Standard package: 30g powder + 25g liquid + 1 measuring spoon + 1 mixing pad



### when used for luting



#### ideal film thickness

The smaller film thickness compared to other brands guarantees accurate match between restoration and denture.

### when used for filling



#### Good durability

The higher compression capacity compared to other brands ensures good durability



#### Low stickiness

The low stickiness to appliance improves operation efficiency



#### Time saving

The short net setting time helps you save time

## TECHNICAL DATA

Product	For Luting	For Filling
Powder/Liquid ratio (g/g)	1.6~1.8/1.0 (1 spoon of powder and 2drops of liquid)	2.3 ~2.5/1.0 (1 spoon of powder and 1 drop of liquid)
Mixing Time	45s	45s
Working Time	2min10s	3min00s
Net Setting Time	3min15s	2min45s
Compression Strength	>140Mpa	>180Mpa
Film Thickness	13µm	/

\* Data From HUGE laboratory