

HUGE



GLOBAL DENTAL SUPPLIER **CATALOG**



Shandong Huge Dental Material Corporation

Add / No.68 Shanhai Road, Donggang District, Rizhao City, Shandong Province,
276800, P.R. China.

Tel / +86 (633) 2277268 marketing@hugedental.com www.hugedental.com

Facebook Huge Dental

Instagram Huge Dental

Youtube Huge Dental

11/2022

Shandong Huge Dental Material Corporation
www.hugedental.com

COMPANY PROFILE

HUGE Dental (short for Shandong Huge Dental Material Corporation) that integrates R&D, manufacturing, sales of dental products and services, was founded in 2006 in Rizhao Shandong, China, the United Nation's Best Cities for Residences. Until 2021, there are three R&D centers functioning independently in Beijing, Qingdao and Rizhao.

Implementing strict QC standards for dental industry, HUGE Dental has passed the CE(EU), FDA(USA), MDL(Canada), ISO13485 and other quality system certifications and product registrations. Its products have been exported to nearly 100 countries/ regions all over the world.

HUGE Dental will continue to take independent innovation as the core motivity, to provide customers with integrated dental solutions. HUGE Dental has been committed to becoming one of the most influential dental medical brands in the world.

FDA CE
Certified

600+
Employees

10,000m²
Manufacturing and
research plant

100+
Sale Countries

50,000,000+
Product Users

HUGE 沪鸽口腔

Huge International Team Profile

This is a team full of passion and vitality, with a group of colleagues who love HUGE and its products; our international business department of HUGE has 33 team members, 50% of whom have overseas study, life and work experience. Many of our team members are proficient in communication in more than two languages: English, Spanish, Russian, Arabic, French, Japanese, Vietnamese, Portuguese. Our team motto is to be a better me, for the dream of HUGE, to realize a better self.

MISSION

Providing safe products for our consumers.
 Providing reliable products to our customers, and help them to succeed.
 Providing secure and challenging working environment for our employees.

CULTURE

We insist satisfied employees mean satisfied customers.
 We created a culture that doesn't value excuses, our team target is to accomplish job, in spite of difficulty. And all of member are rewarded for dealing with that.
 We have a culture where we are incredibly self-critical, and always keep good attitude.
 We think working environment characterized by openness, respect, trust and fairness is an indispensable requirement for innovation and excellent work results.
 We look after our employees, listen to them, and support them in their professional development, health and personal evolution.
 We not only respect cultural and regional differences, but view such diversity as a key element for our long-term success.



Huge Memorabilia

2006-2010

HUGE was restructured refreshed, dedicating into high-quality dental material R&D, and the CAD/CAM tooth molding center was established, 8 series of teeth with different mould design that can be applied to all races worldwide were launched;
 HUGE RIZHAO manufacturing center was set up and became one of the largest synthetic polymer teeth manufacturers in China;

2011-2016

National Certification of New Hi-tech Enterprise was awarded to HUGE. The company was listed with NEEQ in 2015, and in the same year, HUGE acquired Enjoy Laboratory, which is one of the most advanced Glass Ionomer Cement material research and development lab in China. Many newer dental products such as PMMA BLOCK, Zirconia Block, Light Curing Tray, PERFIT Elastomeric Impression Material and Glass Ionomer Cement were launched, HUGE products were exported to 80 countries;
 KAJJING synthetic polymer teeth and PERFIT Elastomeric Impression Material are one of the most popular brands that widely used in the Chinese market;

2017-2020

HUGE R&D Center started to work; HUGE India company started to work; Invisible Orthodontic Solution was launched; Many more new products for adhesive, direct restorations and indirect restorations are to be launched.

2021-

New plant was put into production for dental clinical materials. The Gradient Multilayer Zirconia and 4th generation Acrylic teeth were launched.

Contents

01

Digital Dental Solution

- 13 Digital Invisible Orthodontic Solution
- 17 Digital Full Denture Solution
- 19 Guided Surgery
- 20 i-Vinci Interoral Scanner
- 21 Vinci3D Dental Model 3D Printing Material

02

Dental Clinical Products

- 23 PERFIT Elastomeric Impression Material
- 28 A-Silicone for Bite Registration
- 29 Home Impression Kit
- 31 Restorative Products
- 35 TopCEM Elite System
- 37 Glass Ionomer Cement (GIC)

03

Dental Lab Materials

- 41 PMMA BLOCK
- 43 Flexible Block
- 45 Zirconia Block Premium/Prime
- 46 Casting Wax
- 47 GM Zirconia Block
- 49 Synthetic Polymer Teeth
- 53 Duplication Silicone Material
- 55 Light Curing Tray & Unit
- 57 Denture Base Polymers

HUGE Lastest Highlights

The Pioneer of Dental Clinical and Restorative Products in China

- 1 15+ years clinical practice
- 2 Widely selling in 80+ countries/regions
- 3 Full solution provider for clinical application
- 4 Rapid clinical feedback based on 4 stomatological hospitals in HUGE group



HUGE



4 Professional Stomatological Hospitals

Digital Full Denture

Digital Denture is a complete manufacturing process for the rapid digital production of removable full-arch dentures. This innovative process integrates the treatment steps in the dental practice with the digital manufacturing processes in the lab.



Pink PMMA BLOCK
Removable structures for dentures
(Denture Base)



Multilayer PMMA BLOCK
Removable structures for dentures
(Dental Arch)

Synthetic Polymer Teeth

First multi-layered synthetic polymer teeth manufacturer in China
80Million Annual production capacity of synthetic polymer teeth

New Coming Series- Hardness over 40HV0.2

- Excellent wear resistance and grinding resistance
- Smooth and shiny surface after been re-polished
- Lasting anti staining
- High fire resistance



Products CATALOG

Digital Dental Solution



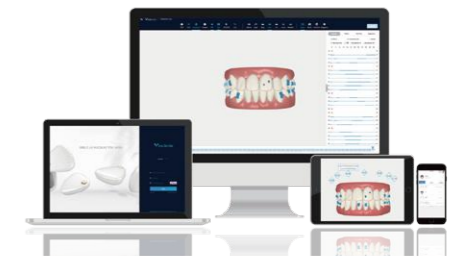
Invisible Orthodontic Appliance



A kind of bracketless invisible orthodontic appliance.
A kind of transparent, invisible, custom-made, and removable appliance. Integrating computer-aided design, orthodontic technology, 3D printing technology and advanced intelligent manufacturing technology.

Process of Clinical Application

- 1** ● **Clinical reception**
Clinical examination + necessary treatment + photos and X-rays
- 2** ● **Case submission**
PVS impression/oral scanning file + photos and X-rays
- 3** ● **3D scheme confirmation**
Online scheme review + modification opinions submission + scheme confirmation
- 4** ● **Aligner producing**
3D printing + compressing impression+ CNC milling + finishing and polishing
- 5** ● **Wearing**
Clinic operation + patients guidance
- 6** ● **Completion of treatment**
Confirmation form + photos and X-rays + impression taking + Retention



Why HUGE Clear Aligner

- 01 Innovative Double-Aligner System**
To ensure more ideal treatment outcomes, the soft aligner starts gently and thicker aligner controls dental root movement precisely.
- 02 Full Treatable Cases**
Full treatable cases from mild case to complicated case are suitable to correct various mal-occlusions.
- 03 Expert Orthodontist-Led Team**
Programmed by the expert orthodontist-led team with scientific and accurate teeth movement, the 3D plan satisfies the requests from doctors and patients.
- 04 Intelligent Software & System**
The self-built system and portal provides the ortho system & dealer system. The convenient multi-interface 3D viewers, including Web, Studio, and APP. The intelligent 3D treatment plan sharing-link function, conducive to effective communication.

- 05 Short Turnaround Time**
Efficient 3+4 mode, 3 days for 3D plan programming and 4 days for aligners fabrication.
- 06 Professional Training Supports**
Online and offline training courses are offered for the purpose of better doctor practice potential exploration and development.

Your Smile.
Our Mission.



• Clear Aligner •

Classic Aligner

Create bright smiles with the classic single-aligner digital orthodontic technology with aesthetics consideration. Supported by the professional orthodontist team, the Classic aligners are made of the high-quality biomedical polymer material to give the new smiles.

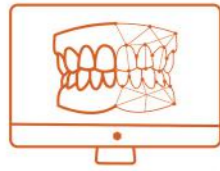
Premium Aligner

Innovative IntelMove tech that helps speed up complex tooth movement, even more comfortable. With a soft aligner (0.625mm) and a hard aligner (0.75mm) for each step, Premium double-aligner system applies the IntelMove technology to exactly realize tooth movement and accurately control tooth position. Weekly change mode is recommended to give full play of soft force and accurate control, to enhance the correction effect for the more complex cases.

DIGITAL FULL DENTURE

A complete manufacturing process for the rapid digital production of removable full-arch dentures

Advantages



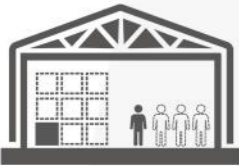
Predictable

Avoid human error and more accurate



Faster

Production time is reduced from 15 to 8 days



Resource Saving

Not only labor but also storage space



Digital Copy

Store the information and easy remake

Seamless Gradient

HUGE Multilayer PMMA BLOCK has a unique seamless gradient to make the color change smoothly from teeth neck to cut end.



Unrivalled aesthetics effect bring you a excellent experience of Digital Full Denture.

Pink PMMA BLOCK

Removable structures for dentures(Denture Base)



4 Shades



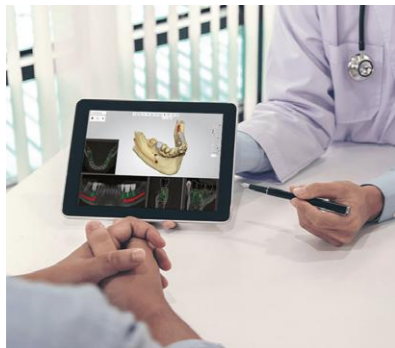
Multilayer PMMA BLOCK

Removable structures for dentures(Dental Arch)



22 Shades





Diagnosis · Design · Plan



Surgical guide production



Guide the implanting surgery

Guided Surgery

Effectively Improve Clinical Safety and Patient Comfort.



Accurate and predictable

Accurate implanting site design, comprehensive implanting surgery plan. VinciSmile ensures the safe and successful surgery and the optimal restoration-oriented aesthetic effect



Minimally invasive and efficient

VinciSmile ensures minimal trauma, rapid healing and short surgery time, improving the implanting efficiency and comfortable experience.



Visualized scheme

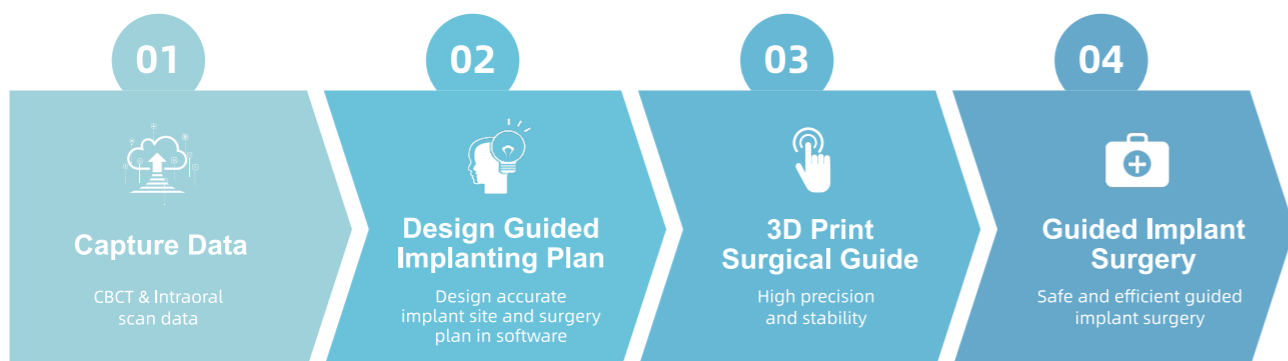
The fine visual implanting images make it easier for doctors to communicate with patients.



Comprehensive supporting equipments

From preoperative intraoral scanner, to 3D printer and resin for surgical guide fabrication, as well as the intraoperative surgery kit. VinciSmile connects treatments from beginning to end.

Digital Guided Implant Workflow



Intraoral Digital Impression Instrument

A powder-free intraoral scanning device can display the teeth details in a high-definition natural view based on video dynamic intraoral scanning. Starting 3D light structure scanning technology, high-speed and anti-shaking performance AI technology makes you enjoy the smart experience and smooth scanning. Intelligent tracking technology ensures fast recovery scanning of any oral position.



ANALYTICS



REAL-TIME



USER-FRIENDLY HMI



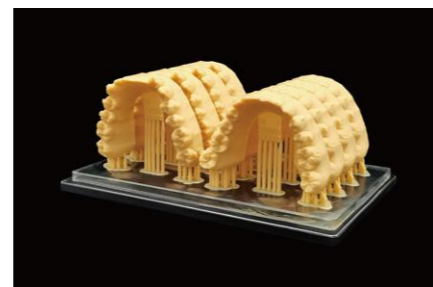
Vinci3D Dental Model-3D Printing Material

Available For 405 nm UV LED not only DLP Printers but also LCD Printers.



Advantages

- High Precision
- Stable Quality
- High Temperature Resistance
- Restoration/Orthodontic both OK



Related Products

Available Material:



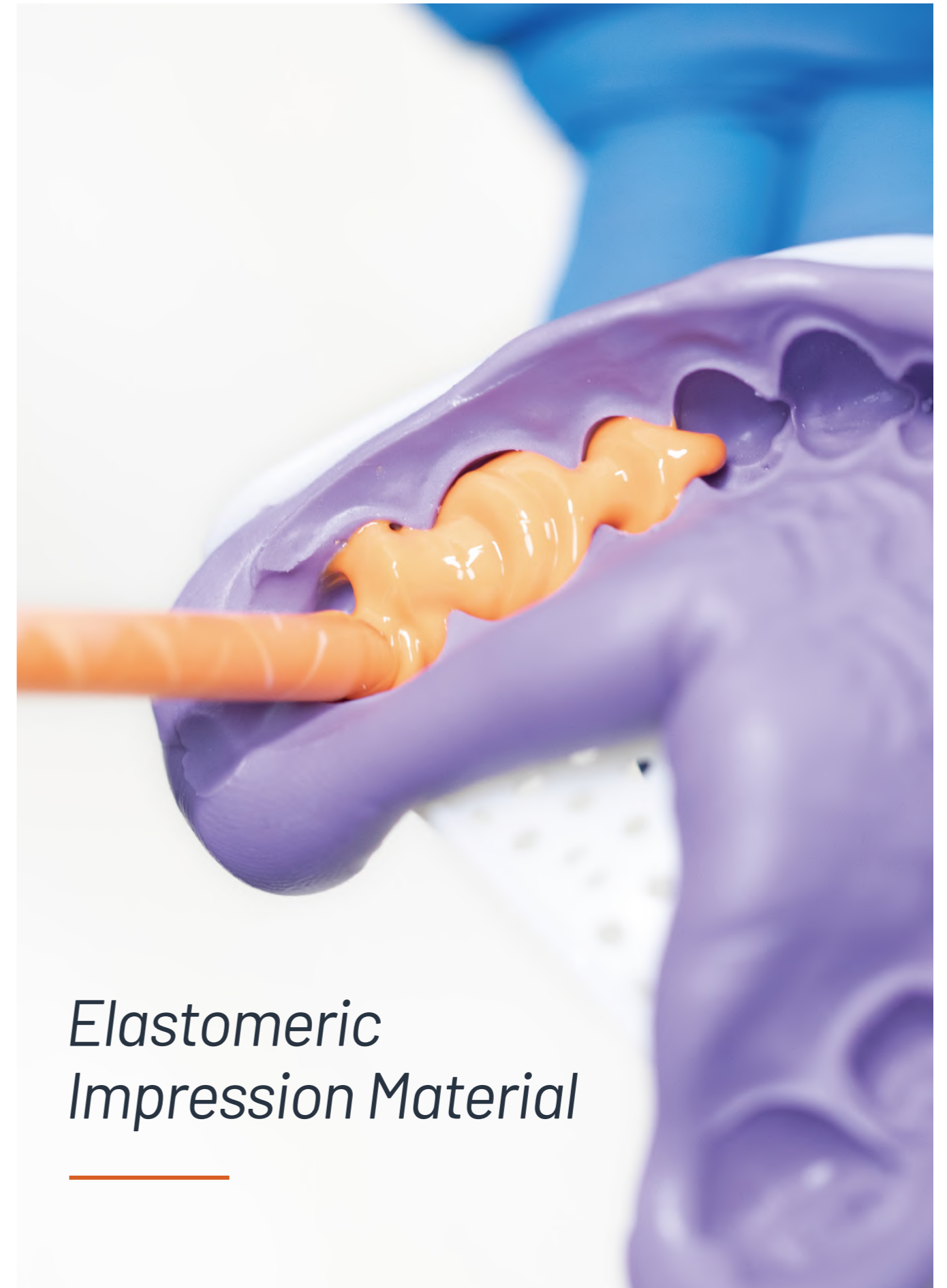
Guide
(coming soon)

Gingiva
(coming soon)

Cast
(coming soon)



Vinci3D Printer



Elastomeric Impression Material

Elastomeric Impression Material

PERFIT is proved to be one of the best silicone impression materials after more than 10 years practice in the market.

PERFIT Putty Hand-Mix

Packaging

400g*1 Base
400g*1 Catalyst
2 Measuring Spoons



● Essential solutions

Indication:

Double step impression with high precision for dental crowns, bridges, inlays, onlays

Advantages:

- Good linear dimensional stability
- High tear strength and tensile strength
- Excellent hydrophilicity and outstanding thixotropy
- Diverse setting time to suit different needs



PERFIT Light Body / Dispenser-Mix

Packaging

50ml*2 Cartridge



Technical Parameter	Putty		Light Body	
	Normal Set	Fast Set NEW	Normal Set	Fast Set NEW
Type	Normal Set	Fast Set	Normal Set	Fast Set
Mixing Time	30s	30s	/	/
Total Working Time	1min30s	1min15s	2min15s	1min30s
Setting Time in oral cavity	3min	2min30	3min30s	2min30s



PERFIT Heavy Body / Dispenser-Mix

PERFIT Heavy Body / Auto-Mix



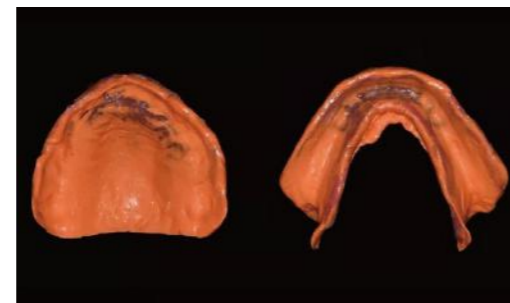
Packaging
50ml*2 Cartridge

Packaging
380ml*1 Cartridge

● **Specific applications solutions**

Indication:

- a. Single/Double step impression technique for crowns, bridges, Inlays, onlays
- b. Ideal silicone with rigidity, high hardness and fluidity for a full denture and implantology.



Advantages:

- a. Accurate: High rigidity and consistency, high reproduction of detail with Light Body
- b. Good mixing quality, avoid bubbles
- c. High precision and stability
- d. Suitable working and setting time ensures high clinical efficiency
- e. Easily removable, excellent patient experience



Technical Parameter	Heavy Body-Dispenser Mix		Heavy Body-Auto Mix	
	Normal Set	Fast Set	Normal Set	Fast Set
Type	Normal Set NEW	Fast Set	Normal Set NEW	Fast Set
Total Working Time	2min	1min30s	2min	1min30s
Intraoral Setting Time	3min30s	3min	3min30s	3min

- For automatic mixing of the 5:1 systems we recommend the use of Sympress.



PERFIT

Regular Body/ Dispenser-mix

* Efficient tool to save more clinical time



● Versatile solutions

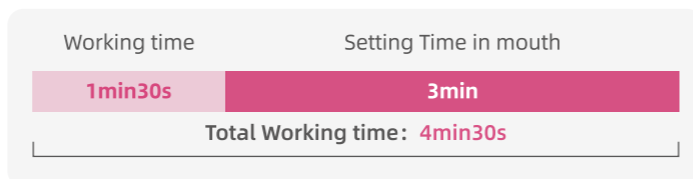
Indication:

- a. Crown and bridge, edentulous, orthodontic and implant impression techniques.
- b. Light-curing guide for
 - 1) Anterior aesthetic restoration
 - 2) Indirect method of orthodontic brace bonding
- Occlusal stamp for composite restorations

Advantages:

- a. Reduce operation difficulty ,improve restoration quality and clinical convenience.
- b. Cut down chair time and re-diagnosis.
- c. Minimize material waste.

Packaging
50ml*2 Cartridge



A-Silicone for Bite Registration

PERFIT Bite Registration/ Dispenser-Mix

Packaging
50ml*2 Cartridge



● Specific applications solutions

Indication:

Accurate occlusal registration

Advantages:

- a. Accurate bite record with high final hardness (Shore A 89)
- b. High rigidity and easy trimming
- c. High dimensional stability

Technical Parameter	Bite Registration-Dispenser Mix	
	Normal Set	Fast Set
Type	Normal Set	Fast Set
Total Working Time	30s	12s
Intraoral Setting Time	1min30s	45s

Impression Kit

Home Impression Kit

Versatile solutions

Indication:

Widely used in on-line oral treatment like invisible orthodontic, teeth beauty and sports mouthguard, for patients to take teeth impression at home

HUGE standard package:

Putty Base 25g*4+ Putty Catalyst 25g*4
Upper trays*2 + Lower trays*2
Instruction for Use*1



Professional OEM services



- 1 Complete Solution Provider**
Integrated product supply
- 2 Rich Customized Options**
Diversified product configuration combination
- 3 Reliable Quality**
Same material with HUGE Perfit

Restorative Products



Restorative Products



HugeBond Universal

Light Cure Dental Adhesive

● Features

- One-component self-etch light cure dental adhesive
- Suitable for various substrates
- Low film thickness (8µm), high bonding strength
- Compatible with total-etch, selective-etch and self etch
- Low microleakage prevents from secondary caries
- Virtually no postoperative sensitivity

● Specification

1*5ml/bottle

HugeBond Universal



TopCEM

Dual Cure Resin Cement

● Features

- Dual cure feature offers flexible options
- High flexural strength of over 100 MPa
- Low film thickness, solubility and water absorption
- 3 opacity and 7 shades available
- Over 400% radiopacity

● Shade



● Specification

1*8g/syringe

TopCEM



TopCEM Ceramic Primer

TopCEM Ceramic Primer

Ceramic Coupling Agent

(1*5ml/bottle)

Features

- Quick solvent evaporation minimizes waiting time
- Suitable for various restoration interfaces
- Simple operation, easy to apply, compatible with light curing or dual curing resin adhesive



P-Etchant

P-Etchant

Phosphoric Acid Etching Gel

(1*3ml/syringe, with 10 dispensing tips)

Features

- 37% concentration
- Good rheology, locate accurately
- Bright colors to identify
- Easy to be rinsed off
- Eliminate surface dirt and make it rough for bonding



HF-Etchant

HF-Etchant

Hydrofluoric Acid Etching Gel

(1*1.2ml/syringe, with 10 dispensing tips)

Features

- 9% concentration
- Good rheology, locate accurately
- Bright colors to identify
- Easy to be rinsed off



TopCEM Elite System

TopCEM Elite System

Adhesive Resin Cement Solution

A professional cementation kit. All indications, one solution. Universally applied to different clinical cases.

CONTENT

- 5ml*1 HugeBond Universal Light Cure Dental Adhesive
 - 8g*1 TopCEM Dual Cure Resin Cement
 - 5ml*1 TopCEM Ceramic Primer Ceramic Coupling Agent
 - 3ml*1 P-Etchant Phosphoric Acid Etching Gel
- Accessories: Helical mixers, Dispensing tips, Mixing pad, Micro brushes



TopCEM-Veneer

TopCEM-Veneer
Light Cure Veneer Cement

(2.5g/syringe, with 10 dispensing tips)

Features

- Seven shades/ three opacity levels for best esthetic results
- Light-cure-only system provides excellent color stability
- High bond strength, low water absorption and solubility guarantee good durability

Shade

TR (Translucent), A0 (Light+), A1 (Light), A2 (Medium), A3 (Dark), White (White Opaque), Opaque (Universal Opaque)



TopCEM-Try in

TopCEM-Try in
Veneer Try-in Gel

(1.5g/syringe, with 10 dispensing tips)

Features

- Try-in pastes offer excellent color match to final cured cement

Shade

TR (Translucent), A0 (Light+), A1 (Light), A2 (Medium), A3 (Dark), White (White Opaque), Opaque (Universal Opaque)



TopCEM-RMGI

TopCEM-RMGI
Resin Modified Glass Ionomer Cement-Luting

(8g/syringe, with 10 dispensing tips)

Features

- Self-adhesive luting cement
- Higher bond, compressive and flexural strengths
- Low film thickness



TrusFIL

TrusFIL
Universal Composite Restorative

(1*4g/syringe)

Features

- Nearly 40% nanostructured filler loading
- Excellent polishability and long-lasting shine appearance, easy to shape and trim
- Exceptional flexural strength, low water absorption and solubility guarantee good durability

Shade

Body: A1, A2, A3, A3.5, A4, B1, B2, B3, B4, C1, C2, C3, C4, D2, D3, D4
Enamel: EA1, EB1, EC1, ET(Translucent)
Dentin: OA2(Opaque, A2)



TrusFIL-Flow

TrusFIL-Flow
Flowable Composite Restorative

(1*2g/syringe)

Features

- Light cure dental restorative material
- Indicated for Class III and V restorations
- Repair of small defects in indirect restorations
- Repair of resin and acrylic temporary restorations

Shade

A1, A2, A3, B1, B2, C1, C2, OA2.



Proseal F

Proseal F
Enamel Coating Resin

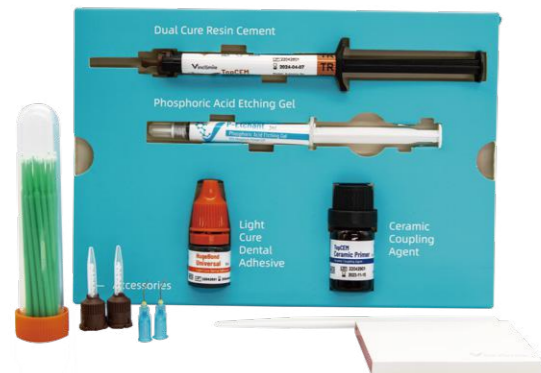
(1*3g/syringe, with 10 dispensing tips)

Features

- Shows pink before curing, and opaque white after light-curing
- A large amount of fluorine, release for a long time
- Little pungent odor

TopCEM Elite System

Adhesive Resin Cement Solution



● Indication

TopCEM Elite System is designed for cementation of all sorts of dental restorations including crowns, bridges, inlays/onlays, veneers, dental posts and other restorations, which are made of metals/alloy, glass ceramic, oxide ceramic (zirconia), metal-ceramic, all-ceramic, composites, and their combinations.

● Packaging

5ml*1	HugeBond Universal Light Cure Dental Adhesive
8g*1	TopCEM Dual Cure Resin Cement
5ml*1	TopCEM Ceramic Primer Ceramic Coupling Agent
3ml*1	P-Etchant Phosphoric Acid Etching Gel
Accessories:	Helical mixers, Dispensing tips, Mixing pad, Micro brushes

PREPARATION/ PRETREATMENT (RESTORATIONS)

· Porcelain /Glass Ceramic Restorations

- 60s
Apply a layer of 9% hydrofluoric acid etching gel (HF-Etchant) to the restoration surface. Wait for 60 seconds.
- 10s
Rinse thoroughly with water for 10 seconds.
- 10s
Dry with oil-free air.
- 60s
Apply TopCEM Ceramic Primer to the inner surface of the restoration, and wait for 60 seconds.
- 60s
Dry the primed surface with oil-free air. *DO NOT TOUCH THE SURFACE WITH YOUR HANDS.

PREPARATION/ PRETREATMENT (TEETH)

- 10s
Clean the tooth to be cemented, rinse with water.
- 10s
Gently dry the tooth surface with oil-free air or cotton pellets. Isolate the teeth with rubber dam. Be careful not to over dry.
- [OPTIONAL]**
 - 20-30s Enamel, 15s Dentin
Apply P-Etchant to both enamel and dentin surface (Total etch) or to enamel surface only (Selective etch).
 - 10s
Rinse the tooth surface thoroughly with water for 10 seconds. With a stream of water (0.2 -0.4 MPa pressure) while using suction tube to dry the field simultaneously.
 - 10s
Gently dry the tooth surface with air.

CEMENTATION/APPLICATION (APPLY ADHESIVE TO TEETH)

Note: Do not light cure bonding agent on the indirect restoration.

- 2-3s
Dry the tooth surface with oil-free air for 2-3 seconds. Be careful not to over dry.
- 20s
Apply HugeBond Universal to the tooth surface evenly in two consecutive coats within 20 seconds to ensure a shiny surface.
- 10-15s
Dry the tooth surface with oil-free air for 10-15 seconds to remove the solvent. (If the shiny surface disappears after drying, re-apply the adhesive and re-dry.)
- 10s
Light cure the tooth surface for 10 seconds.

CEMENTATION OF RESTORATIONS

· Bridges, inlays, onlays, veneers

- 4.5 min
Place the 1:1 mixed TopCEM onto the primed surface of the restoration.
- 4.5 min
Seat the restoration on the tooth in position.
- 2s
Light cure the excess cement in the margin for 2 seconds, remove and clean.
- 4.5 min
Light cure each side of the restoration for 10s, or wait for 4.5 minutes.
- 4.5 min
Finish and polish, adjust the occlusal.

Glass Ionomer Cement

Glass ionomer cement (GIC) is a dental restorative material used as restorative material and luting cement.

Filling I, Luting I and Luting II will meet all your demands of esthetic restoration and cementation.

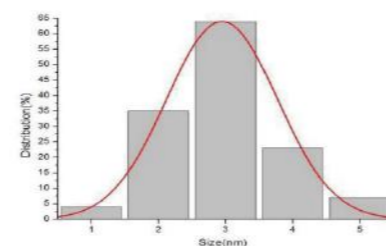


Luting I

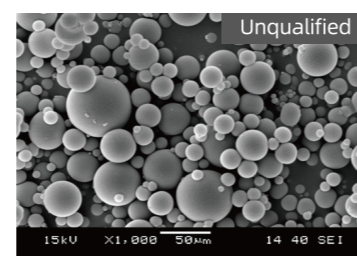
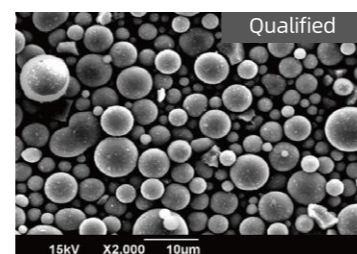
Easy and effective

- **Features**
 - High bonding strength and good biocompatibility
 - Ideal particle size distribution and film thickness
 - Excellent operating performance
 - Continuous fluoride release
 - Low solubility and good edge sealing results

- **Delivery Form**
 - Standard package: 30g powder + 25g liquid + 1 powder measure + 1 mixing pad
 - Sample kit: 10g powder + 10g liquid + 1 powder measure + 1 mixing pad



Particle Size Distribution



Powder Particles Schematic Diagram

Luting II

Multifunctional, apply as both luting and filling

- **Features**
 - Different functions according to the powder-to-liquid ratio
 - High bonding strength and compressive strength
 - Low stickness to appliance
 - Time saving
 - 4 shades available: 0, A1, A2, A3

- **Delivery Form**
 - Standard package: 30g powder + 25g liquid + 1 powder measure + 1 mixing pad
 - Sample kit: 10g powder + 10g liquid + 1 powder measure + 1 mixing pad



Filling I

Esthetic and durable

- **Features**
 - Restoration of primary teeth
 - Restorations of Class III, V and limited Class I cavities
 - Excellent compressive performance
 - Continuous fluoride release
 - 3 shades available: A1, A2, A3

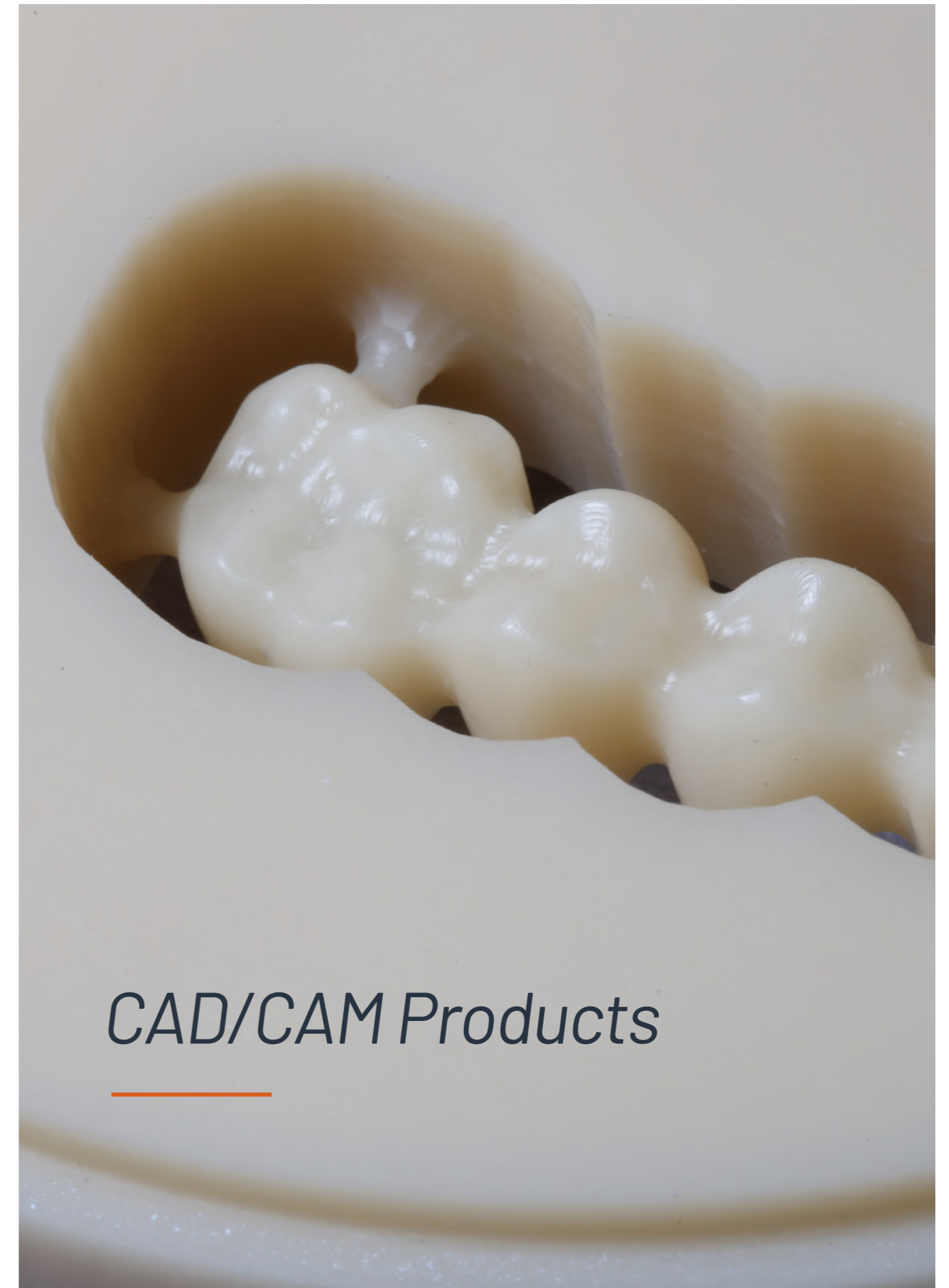
- **Delivery Form**
 - Standard package: 15g powder + 12g liquid + 1 powder measure + 1 mixing pad
 - Sample kit: 5g powder + 5g liquid + 1 powder measure + 1 mixing pad



HUGE GIC offers

More convenient operating process, no need to etch or extra adhesive bonding. Less irritation to dental tissue, more reliable marginal sealing effect, as well as continuous fluoride releasing and outstanding radiopacity.

Indication		Luting I	Filling I	Luting II
Inlay/Onlay/ Crown/Bridge	Ceramic/Glass Ceramic	●		●
	Oxide Ceramic	●		●
	Metal/Metal-Based	●		●
	Composite Resin			
Post/Screw	Metal	●		●
	Oxide Ceramic	●		●
Orthodontic Bands		●		●
Primary Teeth			●	●
Class III, V and Limited Class I Cavities			●	●
Base Lining			●	●
Core Build-Up			●	●
Atraumatic Restorative Treatment			●	●
Cavity of Unstressed Area			●	●



PMMA BLOCK

More than a temporary material

- Seamless Gradient, natural and artistic
- Easy to operate, stable and efficient, Excellent biocompatibility
- Not only for temporary crowns and bridges but also for removable structures for dentures

Technical Data:

Properties	Parameter
Flexural strength	>120 Mpa
Modulus of Elasticity	>2200Mpa
Water Absorption	<20 μ g / mm ³
Water Solubility	<0.8 μ g/mm ³

Systems Available:

- Open system ϕ 98/ ϕ 100/ ϕ 104/ ϕ 108mm, Z-System ϕ 95mm, AG-System ϕ 89mm
- S-System 20mm/40mm/65mm cube with handle, L-System 72mm cube R-System 76mm cube

Thickness: 10mm to 30mm

- Best material for milling a denture base
- Easy to operate, stable and low water absorption, Excellent biocompatibility
- For long-term temporaries with a wear period up to 12 months

Shades Available:



Flexural Strength : >120Mpa

Systems Available:

- Open system ϕ 98/ ϕ 100/ ϕ 104/ ϕ 108mm, Z-System ϕ 95mm, AG-System ϕ 89mm



[Multilayer PMMA BLOCK]



[Pink PMMA BLOCK]

CAD/CAM Products

[Clear PMMA BLOCK]

- Crystal clear surface with outstanding translucency
- Burns out without a trace
- Dense structure and low water absorption

Shades Available: Pink Orange Clear Red



Flexural Strength: >120Mpa

Recommend Application:

- Dental night guard, Implant guide Male mold for casting



[Monolayer PMMA BLOCK]

- Mills purely and polishes easily
- Easy to operate, stable and efficient, Excellent biocompatibility
- For long-term temporaries with a wear period up to 12 months

Shades Available: 16A-D, A0, B0, BL, BL1, BL2, BL3, BL4

Flexural Strength: >120Mpa



[Full Denture PMMA BLOCK]

- Reduce production process
- Denture Arch is stable on the denture base
- Better accuracy than hand-made full denture

Shades Available:

Denture base: 2S 3ST 3S 3ST

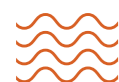
Denture Arch: 16A-D, 2M2, BL, BL1, BL2, BL3, BL4

Flexural Strength: >120Mpa



Flexible Block

HUGE Flexible Block is fabricated from a strong biocompatible nylon thermoplastic compound



High Tensile & Flexural Strength



Fatigue Resistance



Low Water Absorption



Excellent Stability



For the production of removable partial dentures (RPD'S), invisible crystal clear frame-works, night guards, full dentures implant retained dentures, clasps, and other metal-free removable dental appliances processed by CAD/CAM milling machines.



Technical Parameters

Items	Technical Requirements
Tensile Strength	≥30Mpa
Elongation at Break	≥40%
Water sorption	≤5%
Impact Strength	≥20KJ/m2
Flexural Strength	≥30Mpa
Flexural Modulus	≥1000Mpa

Indications

- Invisible clear-transparent frameworks
- Full, partial and implant supported dentures
- Night guards
- Clasps and other dental appliances processed by CAD/CAM milling machines for light weight, aesthetic non-metallic restorations.

Benefit

- Through CAD/CAM production, HUGE Flexible Block eliminates the wax-up stage, investing, casting and finishing
- HUGE Flexible Block when used for any type of denture, eliminates the need of metal reinforcements and metal clasps, improving aesthetics and patient comfort, avoiding the aesthetic compromise of metal clasp, which is replaced with a transparent translucent clasp
- Biocompatible, low water absorption
- Extremely unbreakable
- Lower weight, durable and precision

Zirconia Block

▼ Premium Series

100% Tosoh Material, Stable and efficient



High Translucency(HT)

High strength with attractive translucency

Colors Available: White & 16 Classic colors from A1 to D4
Flexural Strength: >1100Mpa Translucency: 41%



High Strength(HS)

Best option for coping & abutment

Colors Available: White Translucency: 35%
Flexural Strength: >1400Mpa



High Translucency(HT)

High strength with attractive translucency

Colors Available: White & 16 Classic colors from A1 to D4
Flexural Strength: >1100Mpa Translucency: 41%



High Strength(HS)

Best option for coping & abutment

Colors Available: White Translucency: 35%
Flexural Strength: >1400Mpa



Anterior Translucency(AT)

High aesthetic effect with nature look of teeth

Colors Available: White & 16 Classic colors from A1 to D4
Flexural Strength: >700Mpa Translucency: 49%



Multilayer High Translucency(MHT)

Excellent esthetic effect with easy process

Colors Available: A Dark A Light B Light
Flexural Strength: 1100Mpa Translucency: 36%



Anterior Translucency(AT)

High aesthetic effect with nature look of teeth

Colors Available: White & 16 Classic colors from A1 to D4
Flexural Strength: >700Mpa Translucency: 49%



Multilayer High Translucency(MHT)

Excellent esthetic effect with easy process

Colors Available: 16 Classic colors from A1 to D4
Flexural Strength: 1100Mpa Translucency: 36%

Systems Available:

- φ98/φ100/φ104/φ108mm, Z-System φ95mm, AG-System φ89mm S-System
- 20mm/40mm/65mm cube with handle, L-System 72mm cube R-System 76mm cube



Casting Wax

Huge provides high quality casting wax and please contact us for more details.

GM Gradient Multilayer Zirconia Block

Gradient Multilayer provide you the ultimate aesthetic experience



1

Seamless Gradient Natural Aesthetics

Seamless gradient to make the color change smoothly from teeth neck to cut end. HUGE 3D Multilayer Zirconia provide you natural aesthetics of teeth.

2

Translucency Gradient Bionic Transparency

From 47.5% transparency of cut end to 44% of tooth neck, unique gradient achieve life-like texture.

3

Flexural Strength Gradient Comfort and Strength

The flexural strength shows gradient from 700Mpa to 1060Mpa in order to protect opposing dentin by lower strength meanwhile ensure the strength in occlusion.



Seamless Gradient, natural and artistic Easy to operate, stable and efficient

- Flexural Strength: 700-1060Mpa
- Translucency: 44-47.5%
- Shades Available: 16 Classic colors from A1 to D4



Teeth Products

Teeth Products

IMPLA

Designed for Implant, complete and easy to interchange

A premium acrylic teeth range specially designed for individual partial denture and full denture!



Advantages

- The lifelike shade effect and structure of IMPLA are achieved with creative shaded layer of anterior and posterior
- Wide neck form enables easier esthetic adaptation of the prosthesis to the structure beneath
- No preparative hole on the ridge lap of posterior, makes IMPLA also compatible for individual abutment
- The anatomic shape design of posterior gives patient high chewing efficiency and easier contact between cuspids and grooved areas.

KAIPLUS

Hardest teeth over 40HV0.2
Four layers outlook effect

One of the high standard tooth lines which was created with extremely hard composite material!



Advantages

- Smooth and shiny surface after having been re-polished
- High fire resistance- white defects on enamel part can only be found after five times of fire burn near 5cm, better than others which can only resist for one or four times.
- Good lasting anti-stain ability
- Four layers lifelike anterior with internal mamelons' design

MAIST



Suitable for partial and complete denture the same as for implant-supported denture

- Top range which combining aesthetical attractiveness, excellent hardness and natural appearance together
- Five - layered outlook effect and coloring of each different part of the tooth makes the layers of teeth more vivid and realistic

Moulds Selection: Tapering, Square, Ovoid

Shades: Classical 16 A-D shades

Sanring



The beauty of porcelain teeth, the experience of resin teeth, set the two as one

- Life-like, Three layers and porcelain outlook effect
- Thicker enamel design on posterior, better wear-resistance
- Latest-generation polymer materials: Double Cross Link material with high molecular weight

Moulds Selection: Tapering, Square, Ovoid

Shades: Classical 16 A-D shades

KAILI



Satisfy patients' needs by high-quality, long lifetime and reasonable price

- Imported general PMMA raw material, make sure of the good quality
- Labeling patent technology without wax, convenient to use
- Two layers outlook effect with advanced manufacturing technique

Moulds Selection: Tapering, Square

Shades: Classical 16 A-D shades

KAIJING



Overall natural appearance with excellent tooth properties

- Keep crystal clear after grinding and polishing
- Hardness over 25HV0.2 made it with good anti-staining performance

Moulds Selection: Tapering, Short Square, Combination

Shades: A2, A3, A3.5

Bluebell



An influential and very popular economic tooth in the world

- 2 layers outlook effect for both anterior and posterior
- Excellent shade stability with minimum water absorption

Moulds Selection: Tapering, Square, Ovoid, Short Square

Shades: Classical 16 A-D shades

Seniors



Long-centric occlusal pattern posterior with 0° and 10° posteriors

- The improved lingualized posterior with pattern
- Comfortable wearing and low revisiting rate

Moulds Selection: posterior only

Shades: A1, A2, A3, A3.5

Synthetic Polymer Teeth



Package

Standard Package:

- Anterior: 6x16/box (6 pcs/card, 16 cards/box)
- Posterior: 8x12/box (8 pcs/card, 12 cards/box)

Optional Package:

- Full Set: 28x4/box (4 sets/box)
- Full Set: 28x1/box (single box)
- Full Set: 28x1/box (denture box)

Loose teeth:

- 20 pcs/mould/shade/box

Teeth Cabinet:

- 6x1x36/drawer for anterior or 8x1x24/drawer for posterior

Accessories

Teeth Shade Guide



16 A-D world popular shades available for customized 20 shades



16 A-D world popular shades

Teeth Living Mould Guide



Duplication Silicone Material

A-Silicone for Laboratory

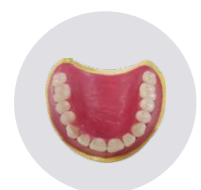
- Duplication of denture moulds
- Control matrix for designing metal implant structures
- Matrix for use in making temporary crown/bridges
- Matrix for the reproduction of gingival tissue

Advantages

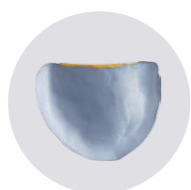
- Easy mixing ratio 1:1
- High fitting and outcoming precision
- High and popular final hardness
- No irritants and nasty smell
- Resistant to high temperature up to 200°C

Indication Scenario Examples

- Removable full denture with Cold-curing resin for injection technique



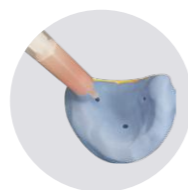
Prepare wax pattern



Adapt A-Silicone



Bond teeth



Inject denture base polymers



Get your perfect denture



- 5kg Base + 5kg Catalyst
- 450g Base + 450g Catalyst

- Partial denture temporary restoration for injection technique



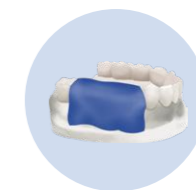
Master model



Place enforcing metal inner crown



Wax teeth restoration



Adapt A-Silicone



Finish partial restoration

- Aesthetic indirect restoration



Master model



Adapt A-silicone



Finish veneer restoration

C-Silicone for Laboratory



- 10kg Base + 40g Catalyst *5 - 5kg Base + 40g Catalyst *2

- Duplication of denture moulds
- Control matrix for designing metal implant structures
- Matrix for use in making temporary crown/bridges
- Matrix for the reproduction of gingival tissue

Advantages

- Low deformation rate
- Precise reproduction of detail
- Available in different hardness:
Shore A hardness 90 and Shore A hardness 85

A-Silicone for Gingival Mask

- Gingival reproduction for implant prosthetic models

Advantages

- Precise detail replication
- Good dimensional stability
- Excellent aesthetic performance



- 2 cartridges (Base+ Catalyst), 50ml each

Light Curing Tray & Unit

— An Ideal Custom Tray Material

Light Curing Tray

- 50pcs/box
- Preformed tray indicated for making individual tray and temporary base plate in dental labs

Advantages

- Easy handling
- 3-minute fast curing
- High plasticity
- Low deformation rate
- Pleasant mint flavour
- Various choices: pink or blue, thicker or thinner, all available



Application

- Making individual tray



- Making temporary base plate



Types	Light Curing Tray	Self-cured resin Tray	Metal Tray
Features			
Operation	preformed → ready for use and time-saving	need mixing and kneading first → complicated and time-consuming	-
Plasticity	soft but with certain strength → easy to trim and shape when opening windows	too soft to work with in dough stage → difficult to trim and shape when opening windows	hard and rigid metal material → difficult to open window
Accuracy	high hardness after curing → low deformation rate ensuring accuracy	existence of contraction → unstable and inaccurate	specific and uniform size → fail to match different oral forms and inaccurate
Smell	mint flavour → pleasant smell	residual stimulative monomer → pungent smell	-

Types	Light Curing Base Plate	Wax base Plate
Features		
Operation	preformed → ready for use and time-saving	need heating first → time-consuming
Accuracy	high hardness after curing → low deformation rate ensuring accuracy	vulnerable to temperature → unstable and inaccurate

Light Curing Unit

- 1pc/box
- Polymerization of Light Curing Tray and other light curing materials

Advantages

- Easy operation
- All voltage available: 110V and 220V
- Two timers available: 180s and 30min
- High polymerization capacity: 3min fast curing of Light Curing Tray



Denture Base Polymers

Through particular multidirectional rotation compounding process, this product is made up by power material of imported high-quality polymethyl methacrylate resin, with cadmium-free inorganic red pigment and bionic stria vascularis added. This product is clinically suitable for prosthodontics as denture base of patients with hypodontia.

Advantages

- Easy to polish
- Excellent handling properties
- Blanch Free
- Craze free and solvent resistant
- Good working time
- Cadmium free



Classification

Type	Mixing Ratio	Mixing Time	Dough Time	Working Time	Curing Time
Fast Heat Curing	1ml Liquid: 2.4g Powder	1-2mins	14-20mins	8-10mins	20mins
Traditional Heat Curing	1ml Liquid: 2.34g Powder	1-2mins	15-20mins	8-10mins	90mins
Self Curing	1ml Liquid: 2.2g Powder	0.5mins	12-14mins	5-6mins	30mins

Delivery forms

- Shades: Clear, 2S, 2ST, 3ST, V, I
- Powder: 100g/bag, 10bags/box or 1000g/can
- Liquid: 500ml/bottle



100g/bag 10bags/box



1000g/can



500ml/bottle

OEM supply



Stepped Pink Shade Guide



Bionic Pink Shade Guide



Stepped Colorful Shade Guide

Shade



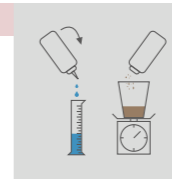
Storage

- Store in a ventilated place, and be protected from naked fire, high temperature and direct sunshine
- Validity: Powder 3 years, Liquid 2 years

Handling Procedure

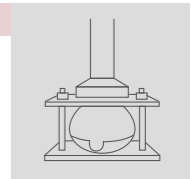
1 Weighing

Liquid & Powder mix Ratio
Fast Heat Curing: 1ml:2.4g
Traditional Heat Curing: 1ml:2.34g
Self Curing: 1ml:2.2g



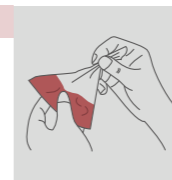
4 Adjusting

Tight the flask by Hydraulic Press Machine



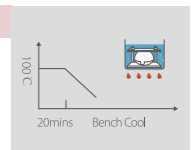
2 Kneading&Mixing

Put the Liquid and Powder in the kneading bag, seal it immediately, and mix them evenly with hands. Then leave the mixture under room temperature 23°C for 15 minutes until it becomes dough.

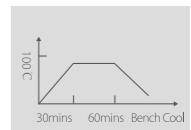


5 Curing

Fast Heat Curing: Put into 100°C water, keep boiling for 20mins, and then cool down naturally.



Traditional Heat Curing: Put into cold water, boil the water to 100°C in 30mins, keep boiling for 60mins and then cool down naturally.



3 Working

Take the mixture out and fill the flask. Maximum working time is 10 mins.



Self Curing: Can be cured at normal temperature. After the initial curing we suggest putting the flask into 60°C hot water for 30mins to cure completely and then cool down naturally

